

Lady Poverty Region Annual Chapter – June 6-9, 2017



**Minister's Annual Report
2016-2017**

Activities Completed

Regional Executive Council meetings:

- August 6, 2016 – Franciscan University of Steubenville, Steubenville, OH
- November 12-13, 2016 – Sisters of the Sacred Heart Center, Munster, PA
- April 22, 2017 – Villa Maria Education & Spirituality Center, Villa Maria, PA
- June 7, 2017 – Villa Maria Education & Spirituality Center, Villa Maria, PA

Activities Completed

Elections:

- St. Bonaventure – June 12, 2016
- St. Lawrence of Brindisi – July 9, 2016
- Holy Spirit – August 21, 2016
- Padre Pio – October 22, 2016
- San Damiano – November 4, 2016
- St. Francis of Assisi, Pittsburgh – April 10, 2017

Activities Completed

Visitations:

- St. Anthony of Padua, Johnstown – September 18, 2016
- St. Lawrence of Brindisi – October 8, 2016
- Alverno – November 9, 2016
- St. Anthony, Uniontown – May 10, 2017

Activities Completed

Regional Events:

- Annual Chapter / Retreat – Villa Maria Education & Spirituality Center, June 9-11, 2017

Projects:

- Lady Poverty Region Strategic Plan (updates) – April 2017
- Lady Poverty Region Governance Guidelines (revision) – April 2017
- Updated logo (next slide)

Activities Completed



Activities Completed

Strategic Plan Goals Completed:

- Highlight resources from FUN Manual in *La Pobrecita*
- Post local fraternity newsletters on LPR website
- Feature interviews with/articles by REC members in *La Pobrecita*
- Timely scheduling of visitations and elections
- Encourage regular review of Rule and Constitutions during visitations

Activities Completed

Strategic Plan Goals Completed:

- Encourage sharing of local fraternity events via LPR website and *La Pobrecita*
- Encourage members to visit LPR website
- Encourage fraternities to report database and Directory changes as they occur
- Encourage timely submission of annual reports
- Integrate retreat experience into Annual Chapter every three years (in the free year)

NAFRA Annual Report – 2016

- Active/Excused Professed: 338
(compared to 357 in 2015; 368 in 2014)
- Candidates: 22
(compared to 23 in 2015; 25 in 2014)
- Inquirers: 27
(compared to 15 in 2015; 22 in 2014)
- Affiliates: 1
(same as in 2015 and 2014)

NAFRA Annual Report – 2016

- Deaths: 17 (15 in 2015; 16 in 2014)
- Lapsed: 14 (23 in 2015; 26 in 2014)
- Withdrawals:
 - Temporary: 0 (same as in 2015 & 2014)
 - Definitive: 0 (1 in 2015, 0 in 2014)
 - Suspended: 0 (same as in 2015 & 2014)
 - Dismissed: 0 (same as in 2015 & 2014)

NAFRA Annual Report – 2016

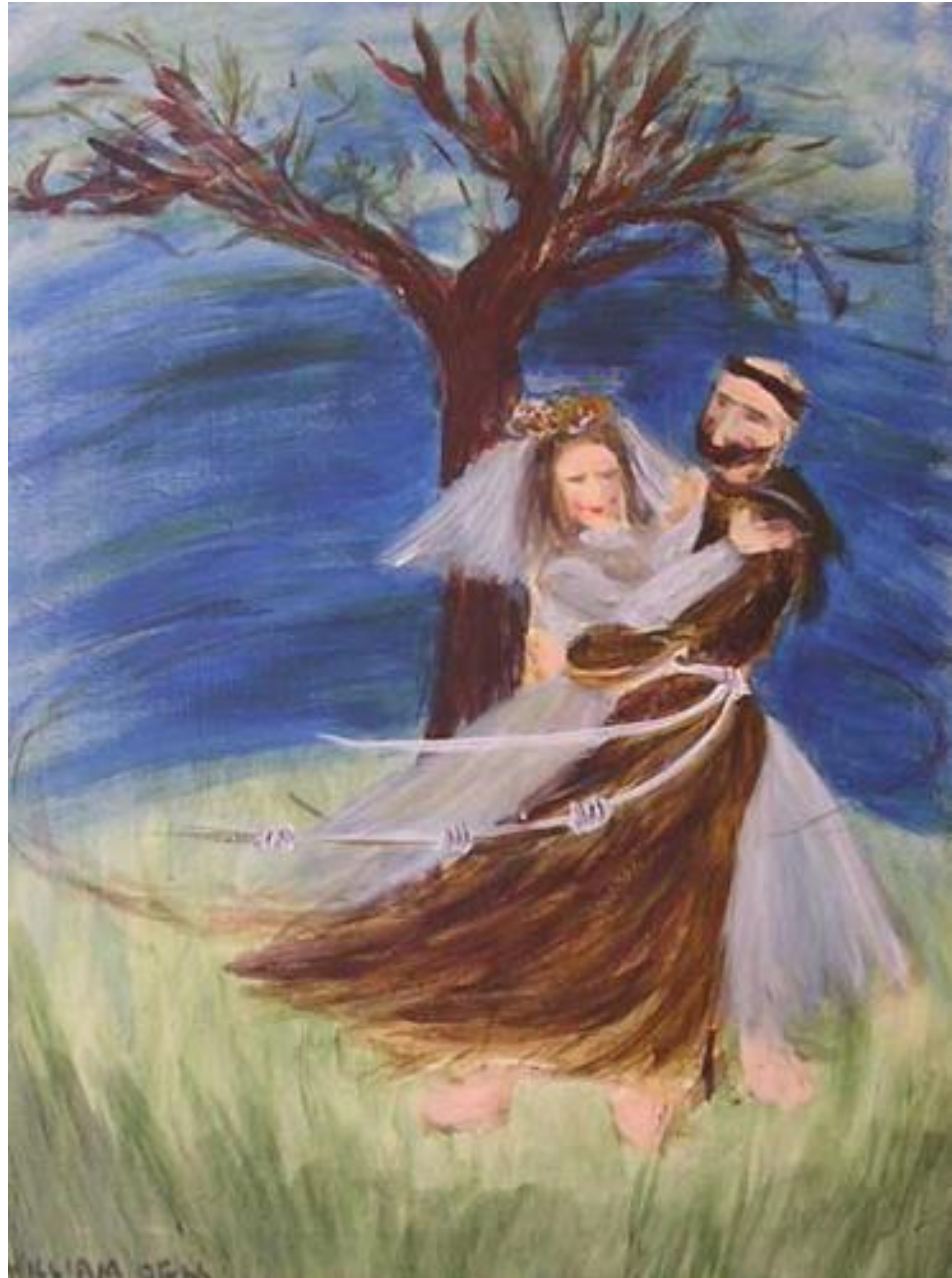
- Established Fraternities: 23
(25 in 2015 and 2014)
- Established Fraternities without Spiritual Assistants: 3 (0 in 2015; 2 in 2014)
- Emerging Communities: 0
(same as in 2015 and 2014)
- Newly Forming Groups: 0
(same as in 2015 and 2014)

NAFRA Annual Report – 2016

- Total number of Spiritual Assistants: 19
(compared to 25 in 2015; 21 in 2014)
- Number of Franciscan Friars: 16
(compared to 21 in 2015; 17 in 2014)
- Number of Franciscan Sisters: 2
(same as in 2015 and 2014)
- Number of OFS: 1
(compared to 2 in 2015 and 2014)

Looking Forward to 2018

- Developing servant leaders
- Revitalizing our commissions – Youth, JPIC, and Formation
- Enhancing fraternal life and apostolic activity
- Celebrating our Franciscan identity
- Welcoming National visitors – June 2018
- Pilgrimage to Assisi – Fall 2018 (tentative)
- Dancing with Lady Poverty ...



Many thanks . . .

- We extend our gratitude to the fraternities with whom we have visited and worked over the past year to build up the regional fraternity!
- We also thank all members of Lady Poverty Region for your support and good will throughout the year. It has been an honor and a pleasure to serve you!
- Finally, I extend my personal thanks to the members of the Regional Executive Council, whose dedication, diligent work, and wise counsel have enabled us to accomplish as much as we have in this past year.



Questions?

Peace and Blessings to All!

Respectfully submitted,

Patricia B. Serotkin, OFS

Patricia B. Serotkin, OFS
Minister, Lady Poverty Region

